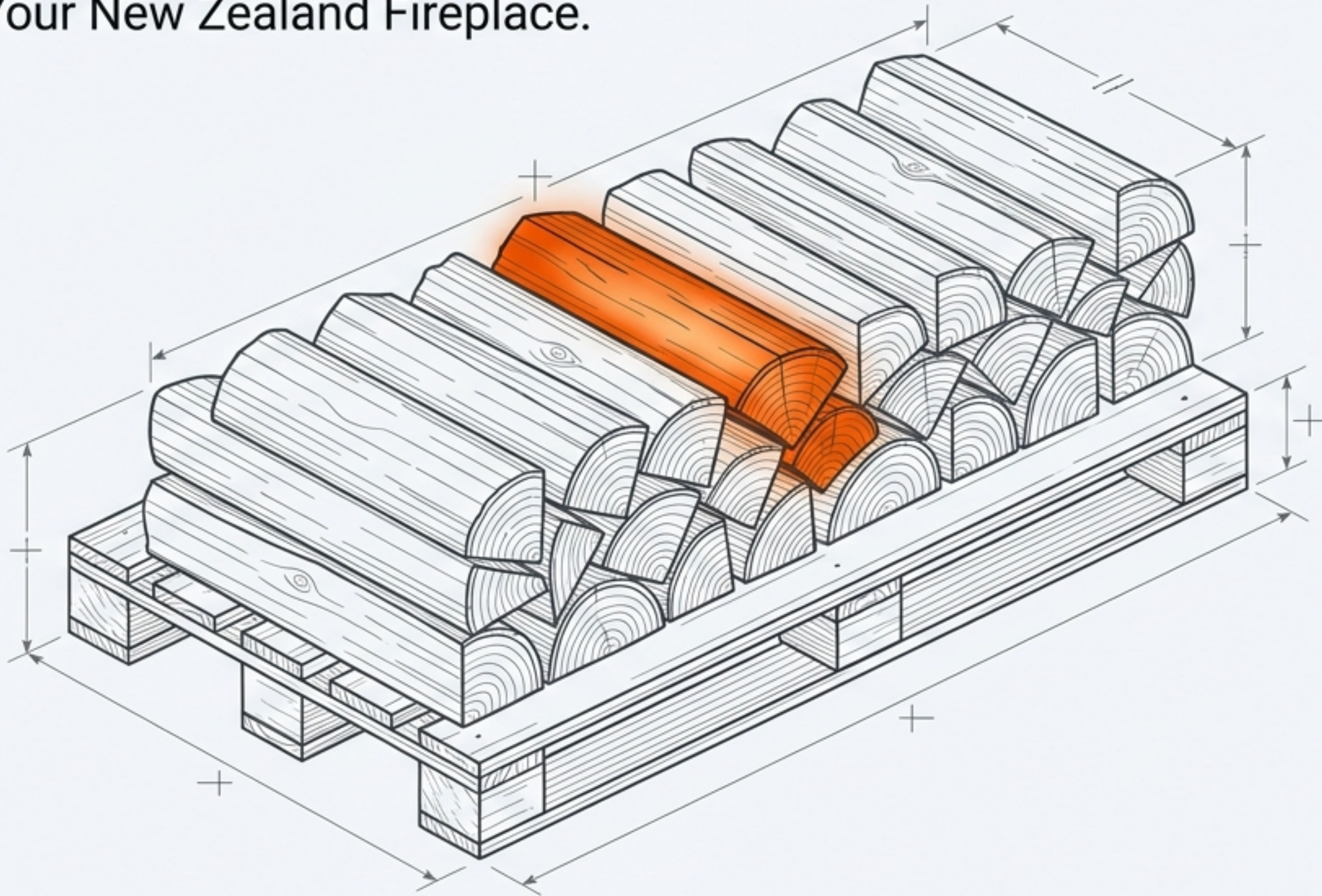


THE SCIENCE OF SEASONING

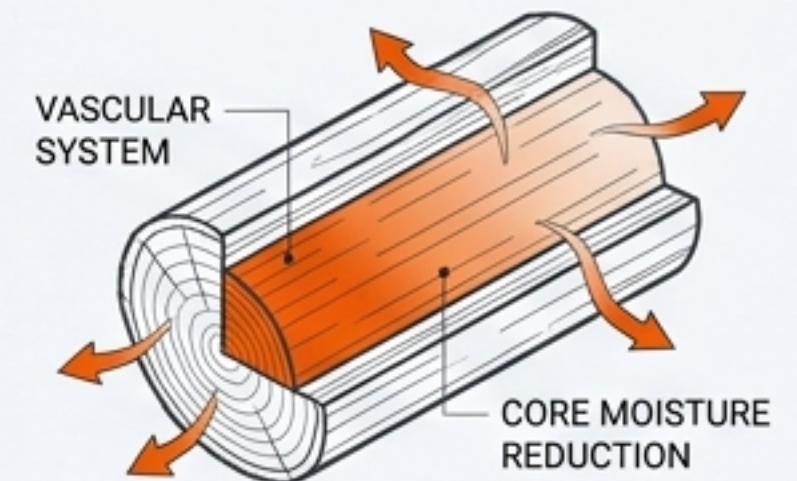
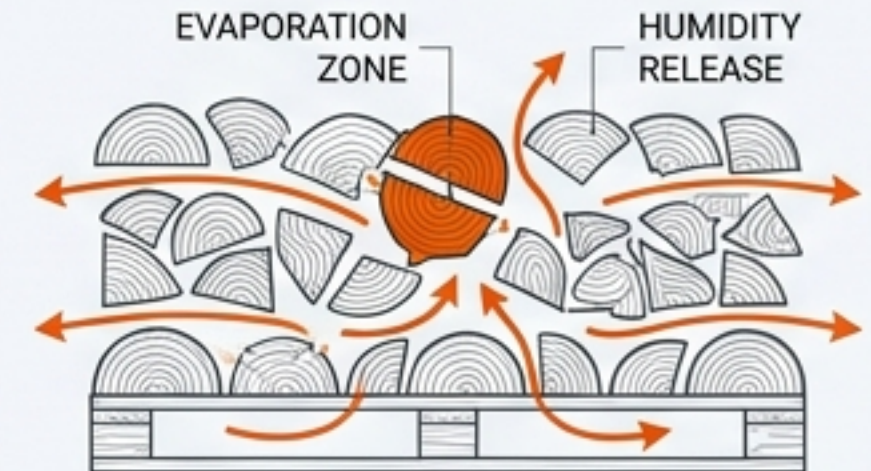
An Operational Guide to Optimizing Your New Zealand Fireplace.



OPTIMIZATION THRESHOLDS

MOISTURE CONTENT (MC)	BTU POTENTIAL	OPERATIONAL EFFICIENCY
↓ 15% - 20% ↑	<p>MAXIMUM OUTPUT</p>	<p>HIGH (≥85%)</p>

SEASONING PROCESS & AIRFLOW



The Heat Loss Equation

Green Wood Fights Itself

Freshly cut wood contains up to 100% moisture. Burning it forces the fire to waste its energy boiling water instead of heating your home.

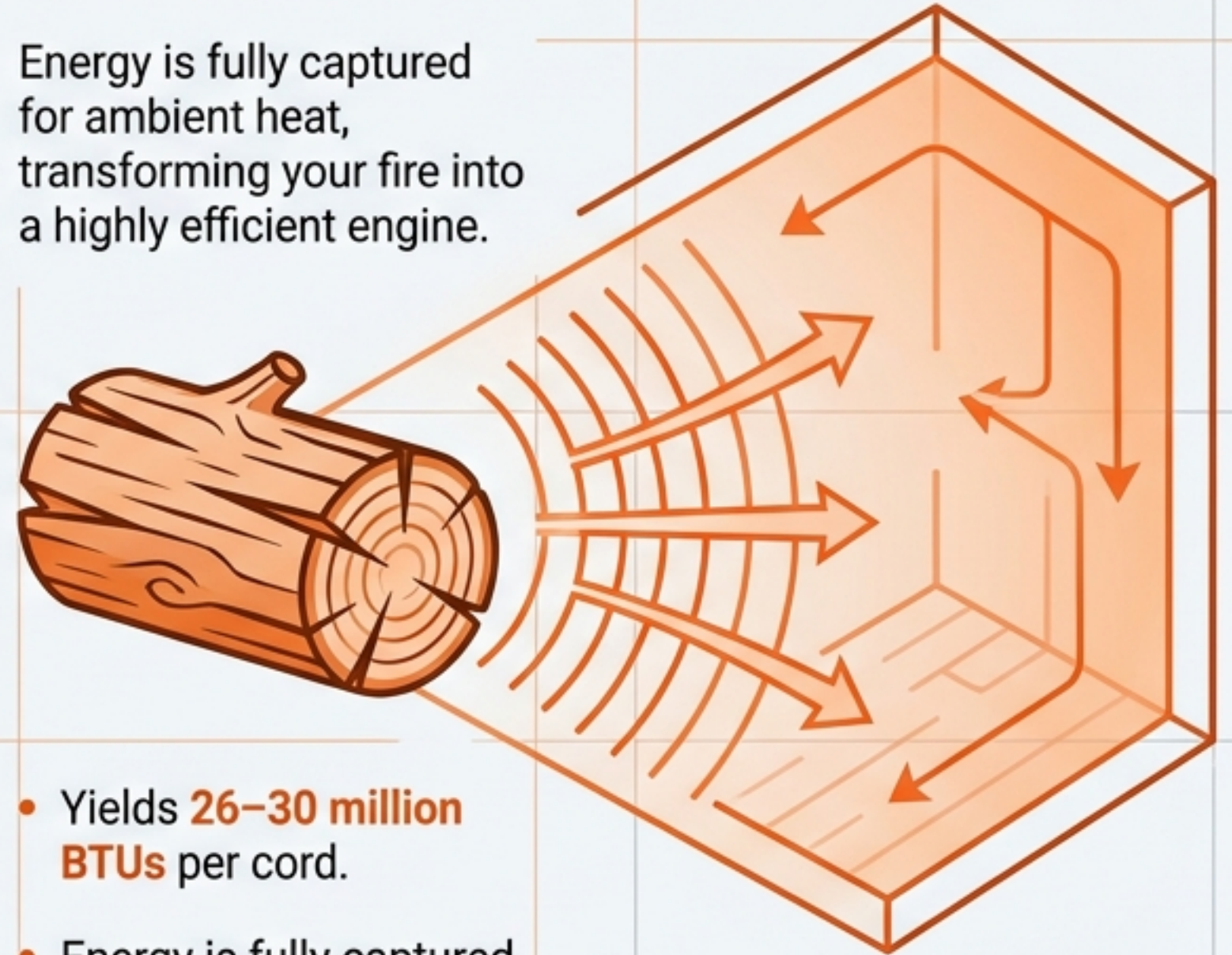
- Yields only 15–18 million BTUs per cord.
- Firebox temperature remains low.



Seasoned Wood (<20% Moisture)

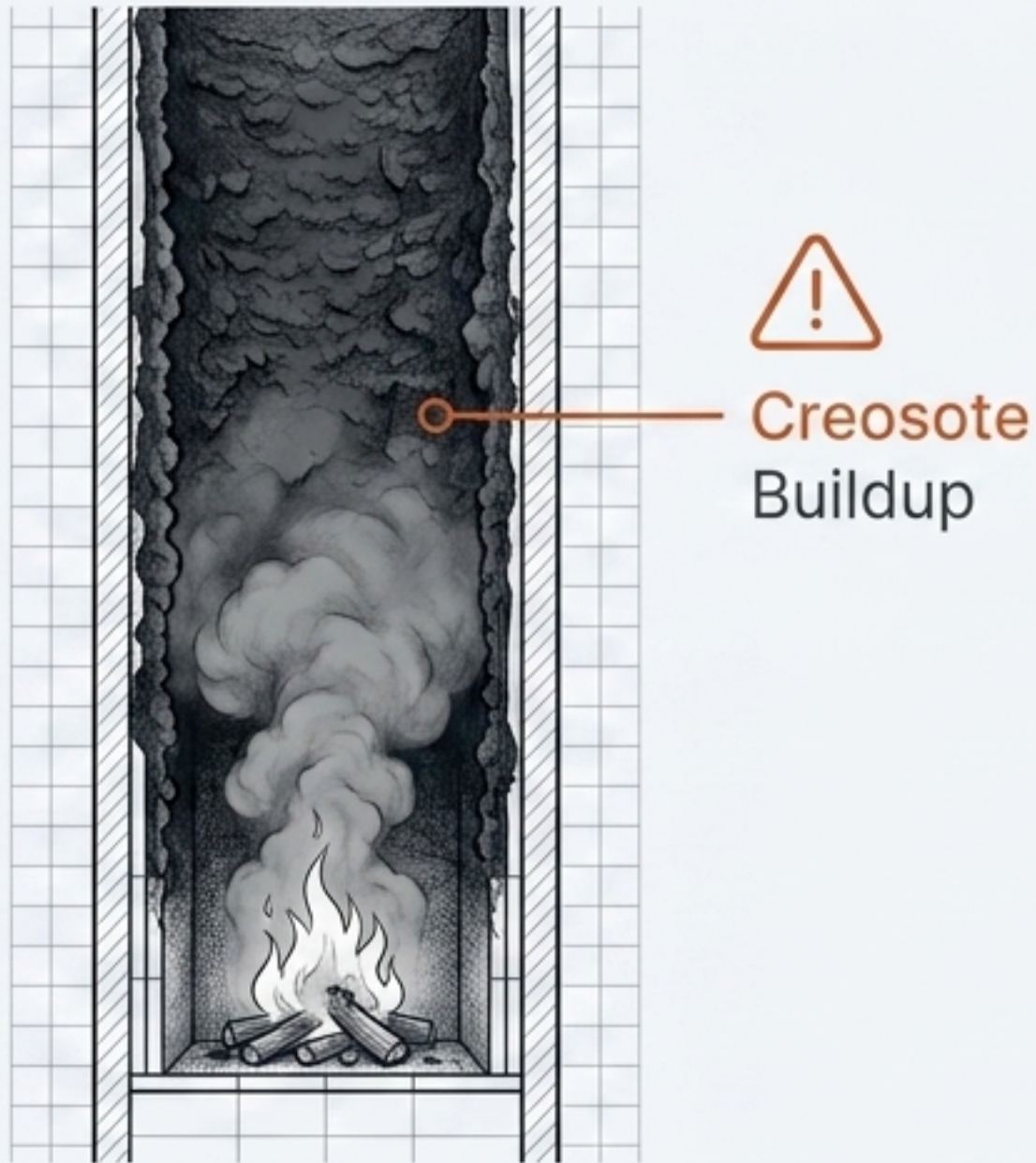
Energy is fully captured for ambient heat, transforming your fire into a highly efficient engine.

- Yields 26–30 million BTUs per cord.
- Energy is fully captured for ambient heat.



The Creosote Threat

Wet wood creates incomplete combustion, resulting in excessive smoke and the rapid accumulation of creosote—a highly flammable, sticky tar.



- **Increased Fire Hazard:** Creosote is the primary cause of dangerous chimney fires.
- **Maintenance Drain:** Unseasoned wood guarantees more frequent, costly visits from the chimney sweep.
- **The Solution:** Proper seasoning starves the fire of water, eliminating the conditions that create creosote.

The Pipeline to Perfect Firewood

1. Source: Harvest in late winter when sap flow is low.



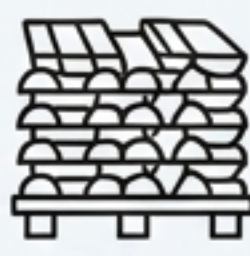
2. Split: Quarter rounds to 3-6 inches to maximize surface area.



3. Site: Position for maximum southern sun and constant wind.



4. Stack: Build elevated, single-row architectural stacks.



5. Cover: Shield the top third; leave sides exposed to breathe.



6. Wait: Allow 6 to 24+ months depending on the NZ species.

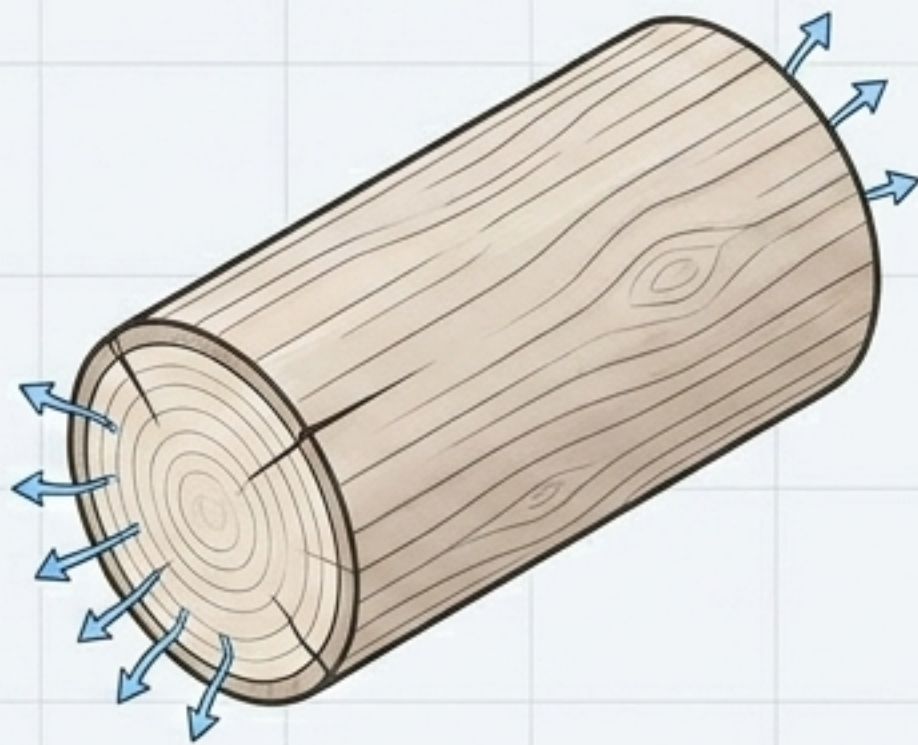


7. Test: Confirm <20% moisture before moving indoors.



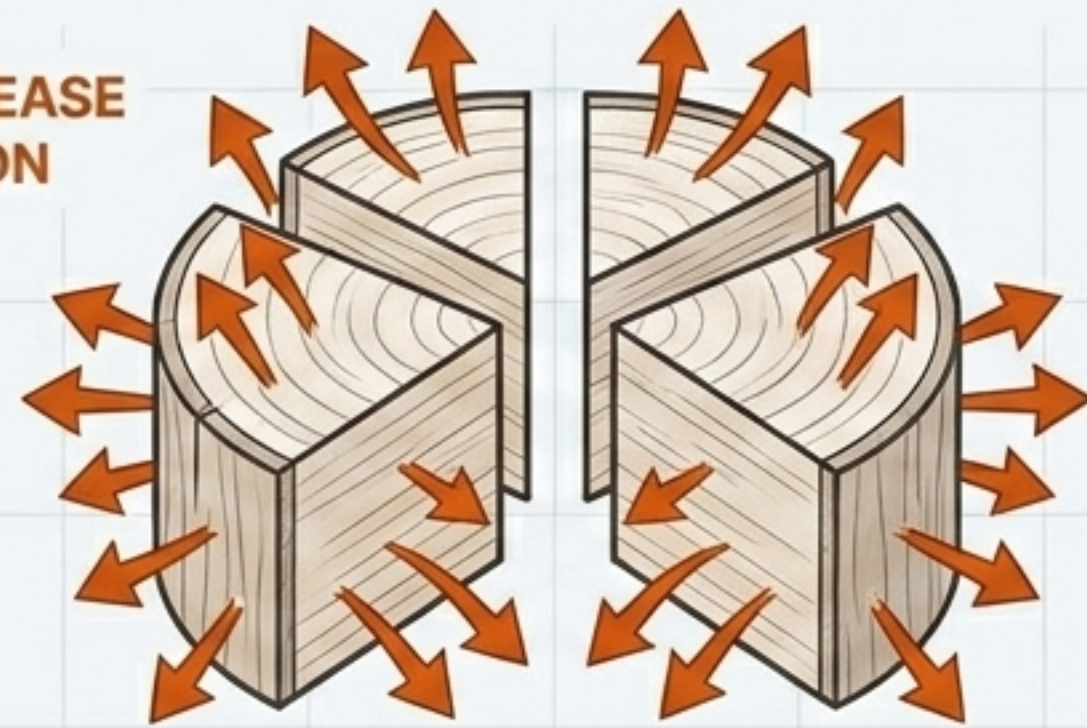
Maximize Surface Area for Evaporation

Logs dry from the ends and exposed internal surfaces. A solid round log might only dry an inch deep over an entire year.



Limited Surface Area: Slow Drying

↑ MASSIVE INCREASE
IN EVAPORATION



Maximized Surface Area: Rapid Drying

Optimal Size

Split wood to 3–6 inches in diameter.

Timing

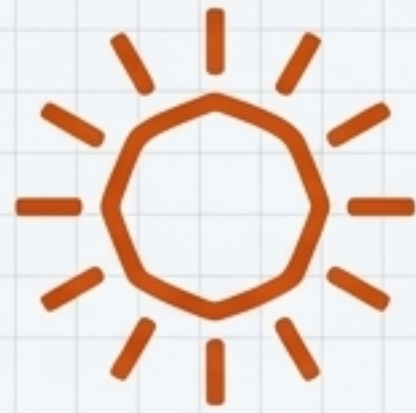
Split wood immediately when green; it splits infinitely easier than aged, hardened wood.

Shock Drying

Let fresh rounds sit scattered in the sun for 2–4 weeks before stacking to rapidly pull out surface moisture.

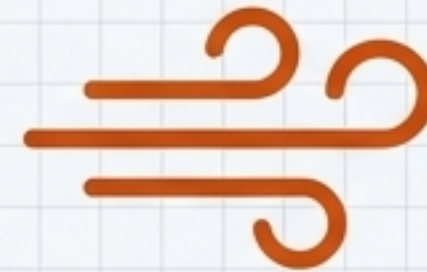
Engineer the Microclimate

Your stack's location dictates the speed of the seasoning process.



Solar Exposure

Prioritize maximum northern/southern sun exposure (4-6 hours daily).



Airflow Corridors

Stagnant air traps humidity. Ensure the site receives constant, unimpeded wind.



Ground Drainage

Avoid low-lying depressions where rainwater pools.



Structural Distance

Keep stacks a minimum of 3-5 feet away from houses or solid walls to prevent moisture transfer and pest bridging.

Architectural Stack Design

Bark Orientation:

Stack bark-side up to create a natural overlapping shingle effect that sheds rain.

Height Limit:

Cap stacks at 4-5 feet to maintain structural stability.

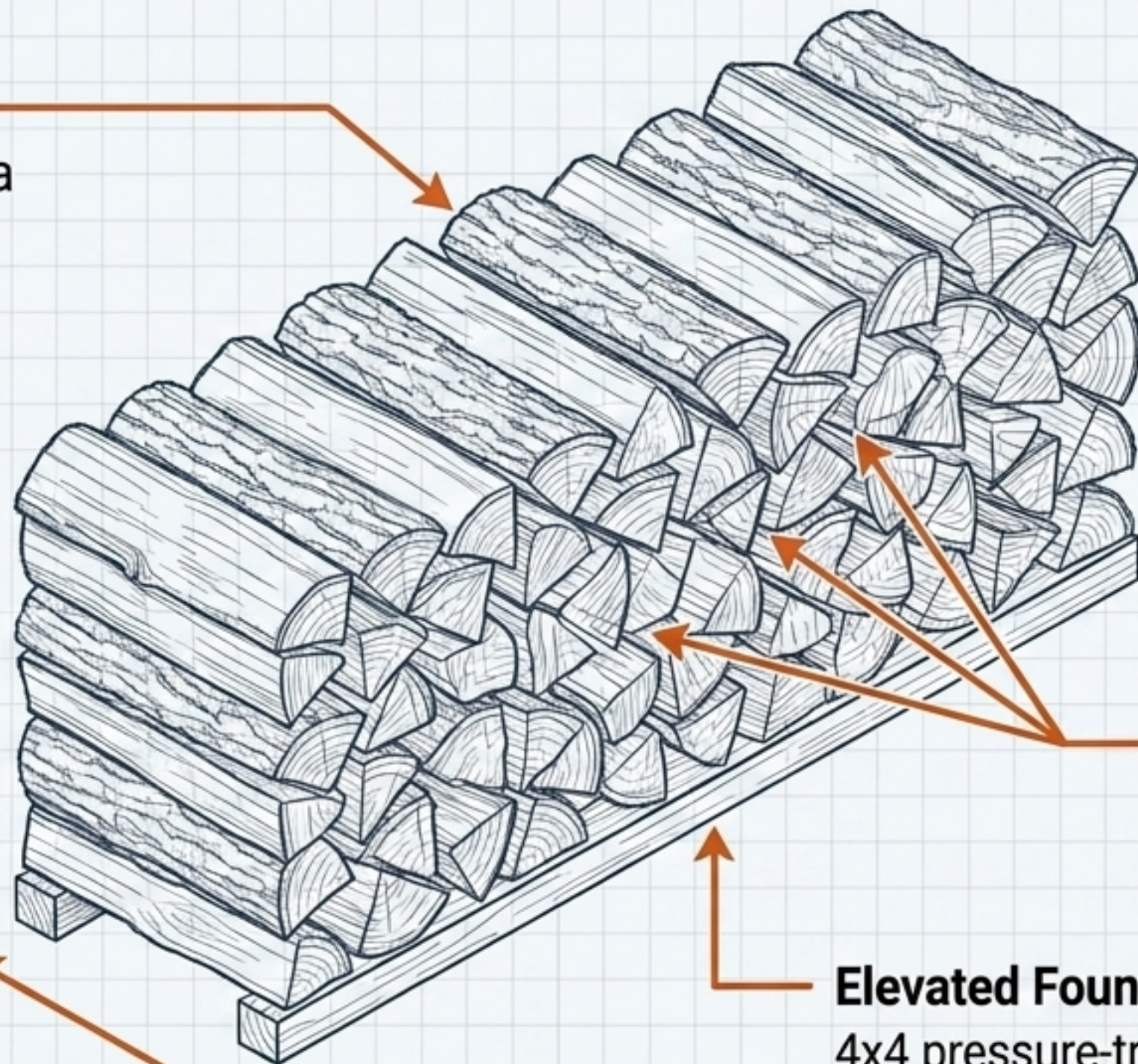
Single-Row Depth:

Stacking one row deep ensures wind penetrates entirely through the pile.

Internal Airflow: Maintain $\frac{1}{4}$ to $\frac{1}{2}$ inch gaps between pieces. Do not pack tightly.

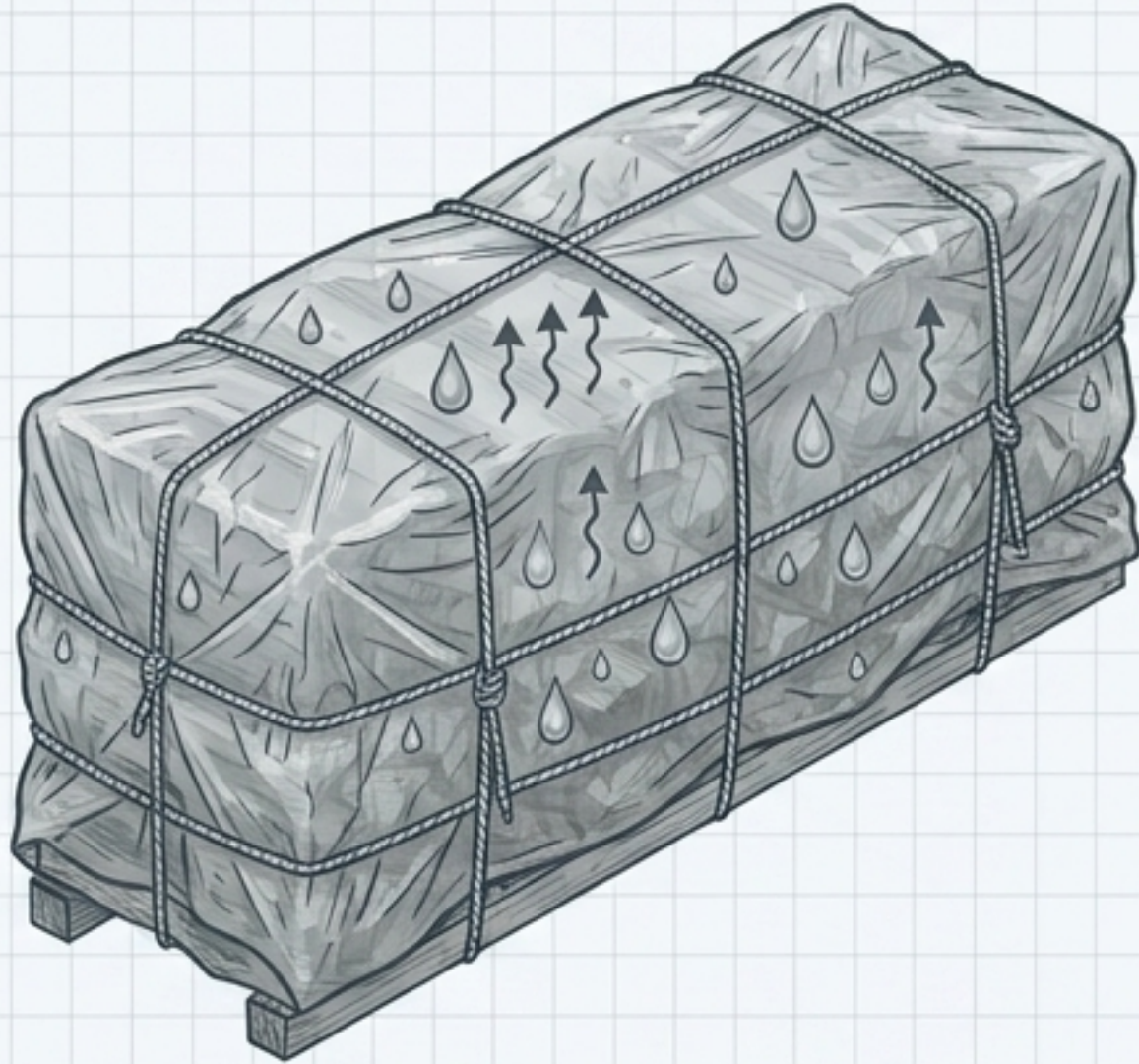
Elevated Foundation:

4x4 pressure-treated runners or pallets keep the bottom row 4-6 inches off wet soil.



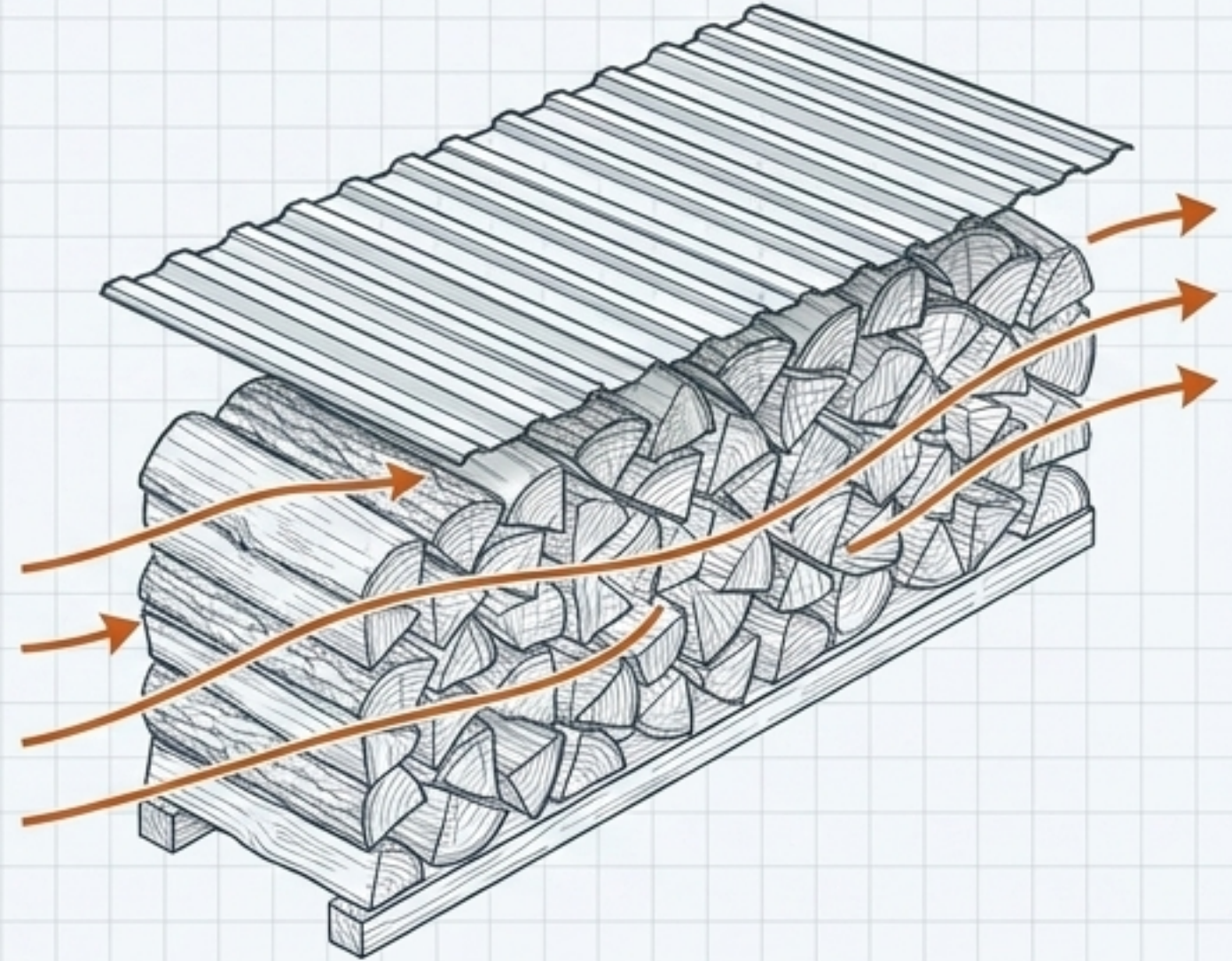
Protect from Rain, Do Not Suffocate

The Error



Wrapping a stack tightly in a plastic tarp traps internal moisture and ground evaporation, keeping wood perpetually wet and inducing rot.

The Optimal Setup



Cover only the top third of the stack using a rigid roof or weighted tarp. Leave all four sides completely exposed to allow continuous wind ventilation.

NZ Species Matrix: Fast Heat & Kindling

Softwoods ignite rapidly but burn faster. Ideal for establishing the firebed.

Plantation Pine



- **Visual Profile:** Light colored, compact bark, mostly knot-free.
 - **Seasoning Time:** 1–2 years.
 - **Role:** Readily available; excellent for kindling. Low overall heat output.
-

Douglas Fir / Oregon



- **Visual Profile:** Light smooth bark, distinctive orange center.
 - **Seasoning Time:** 1–2 years.
 - **Role:** High heat, low ash, exceptional for splitting into kindling.
-

NZ Species Matrix: Overnight Hardwoods

Dense woods that demand patience but reward with massive, sustained BTU output.



Macrocarpa

- **Seasoning Time:** 3–5 years.
- **Role:** Excellent heat and long burn. Tends to spark (enclosed burners only).



Blue Gum

- **Seasoning Time:** 5–6 years.
- **Role:** Premium hardwood. Radial cracking indicates low moisture. Incredible sustained heat.



Tea Tree / Manuka

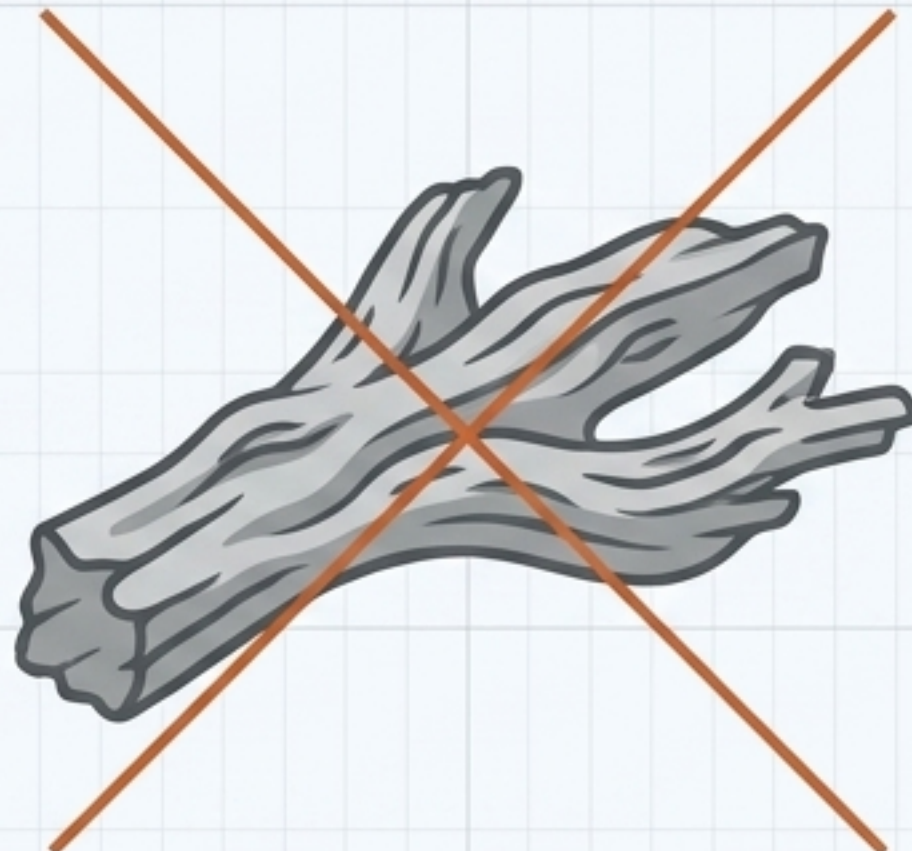
- **Seasoning Time:** 3–5 years.
- **Role:** Deep brown, stringy bark. Hot, slow, overnight burn.

Fuel to Explicitly Avoid



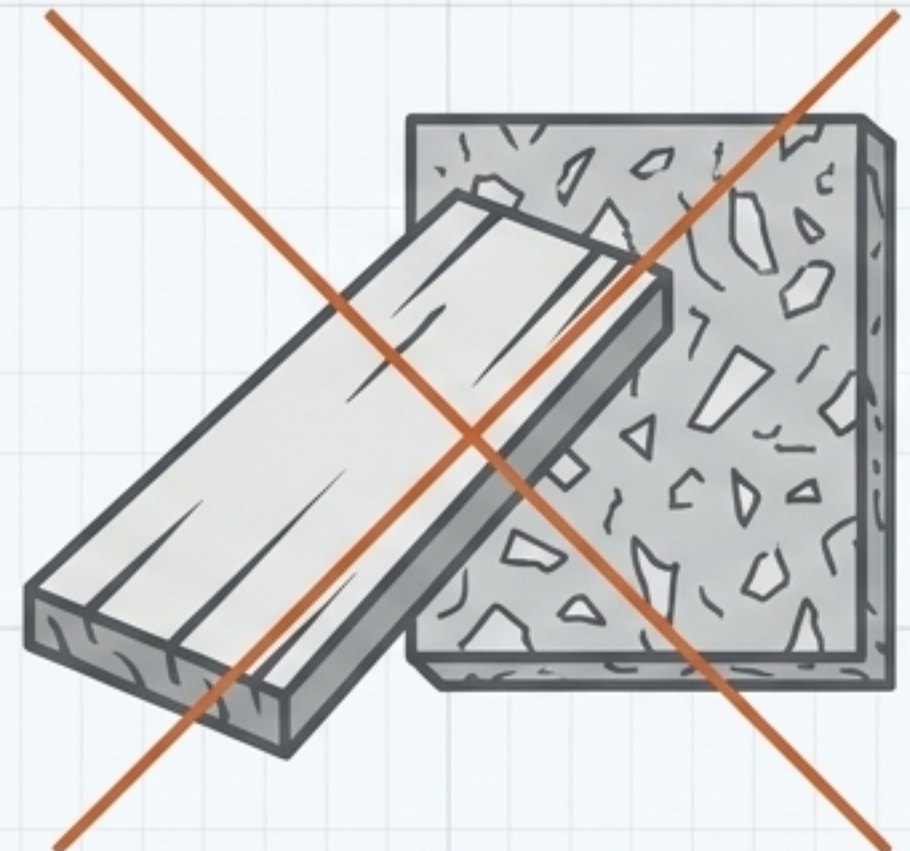
Old Man Pine

Cut from 40-50 year old shelter belts. Thick, heavy bark loaded with resin and gum. Produces extreme smoke and rapid creosote buildup. (If you must use it, chop it down to small kindling only).



Driftwood

Ocean salt and trapped moisture will corrode your woodburner components and pollute local air.



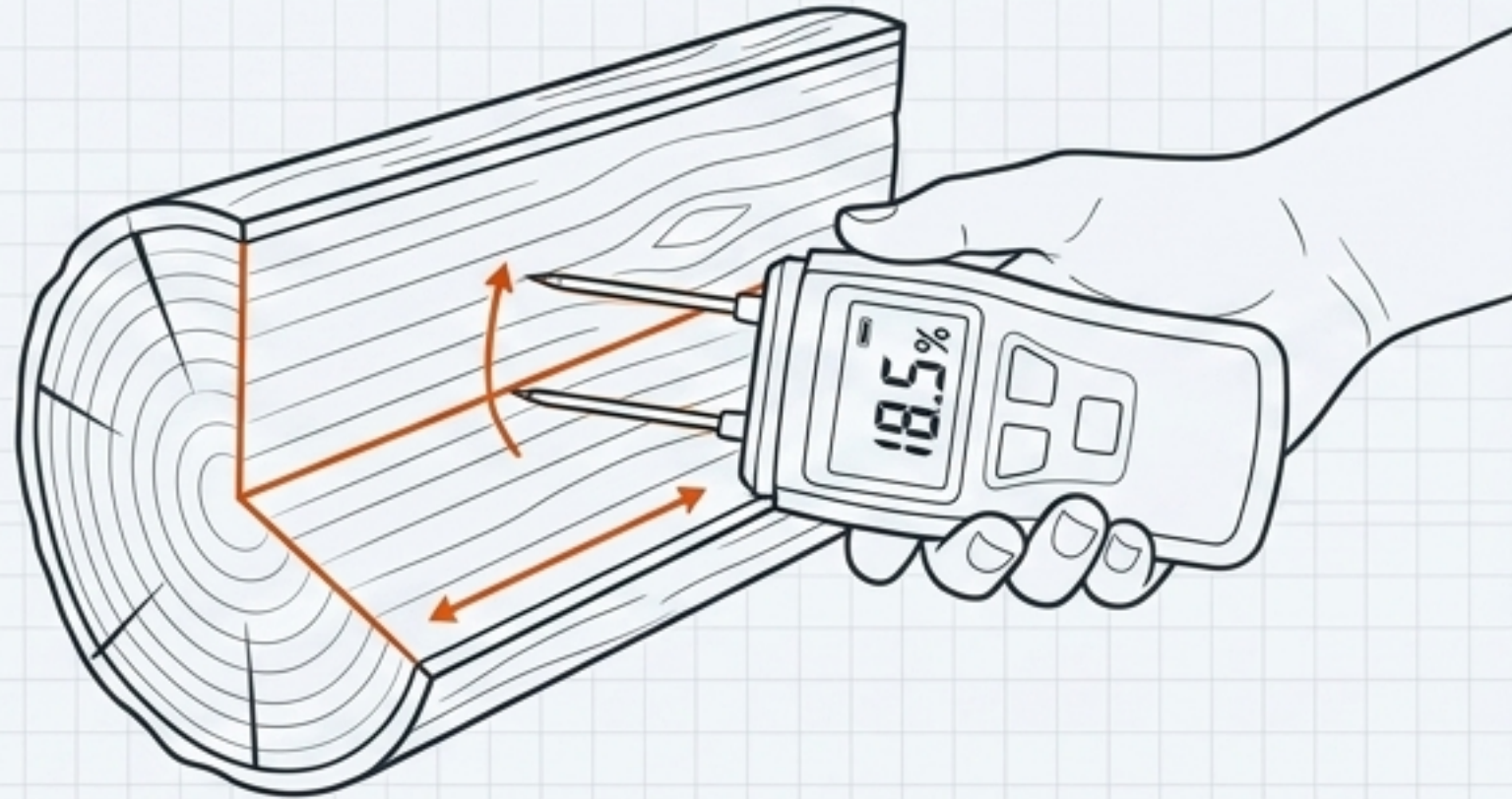
Treated or Painted Wood

Plywood, MDF, and chemically treated timber release highly toxic gases into your home and the environment.

Quantitative Verification

Never guess if wood is ready. A digital moisture meter is a non-negotiable tool.

The Testing Protocol



Split a log in half. Immediately press the meter pins into the freshly exposed interior face, parallel to the grain. Readings taken from the old exterior bark are highly deceptive.

The Target Zone



Your reading must fall below 20%. The absolute optimal efficiency zone is 15% to 20%.

Qualitative Field Indicators

Use your senses to corroborate moisture meter readings:



Sight

Look for deep **radial cracks** ("**checking**") spreading from the center out to the bark on the cut ends. Colors should be dull and **greyed**, not bright.



Sound

Strike two pieces together. Seasoned wood produces a sharp, crisp "**clack**" or ringing sound. Wet wood produces a dull, heavy thud.



Touch

The bark should feel **loose** and easily peel away from the wood.

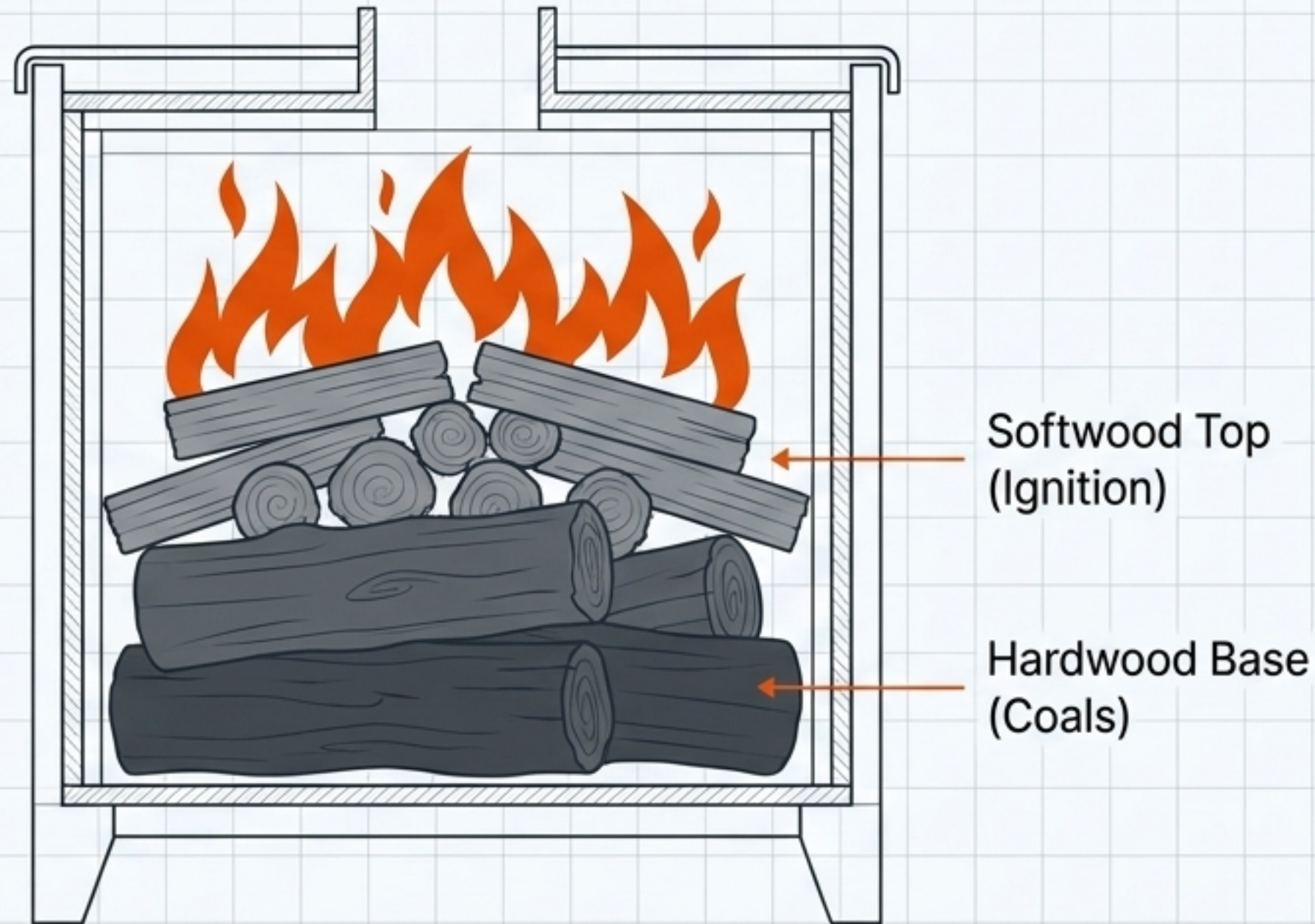


Weight

Fully seasoned wood feels remarkably **light** compared to a freshly cut green log of the exact same size.

Maximizing BTU Extraction

Properly seasoned wood deserves strategic loading.



The Layered Load

Place dense, slow-burning hardwoods (like Blue Gum or Macrocarpa) at the base. Top them with faster-burning softwoods (like Pine). The top ignites quickly for **secondary combustion**, while the base provides long-lasting coals.

Air Control

Seasoned wood requires less oxygen. Run primary air wide open for 15 minutes, then restrict to **25-30%** for a clean, sustained overnight burn. Do not overpack the firebox; leave 20% empty for air circulation.

Seasoning Pitfalls to Avoid

Not That



Not That: Stacking tight against the garage wall.



Do This

Do This: Stand stacks 3-5 feet away from all buildings.



Not That: Wrapping the entire pile in a plastic tarp.



Do This: Cover the top third only; leave sides open to the wind.



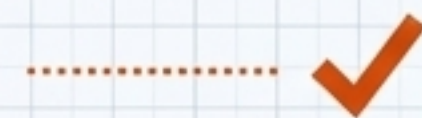
Not That: Stacking rounds immediately after felling.



Do This: Scatter for 2-4 weeks to shock-dry, then split and stack.



Not That: Assuming purchased "seasoned" wood is ready.



Do This: Always verify the core moisture with a meter.



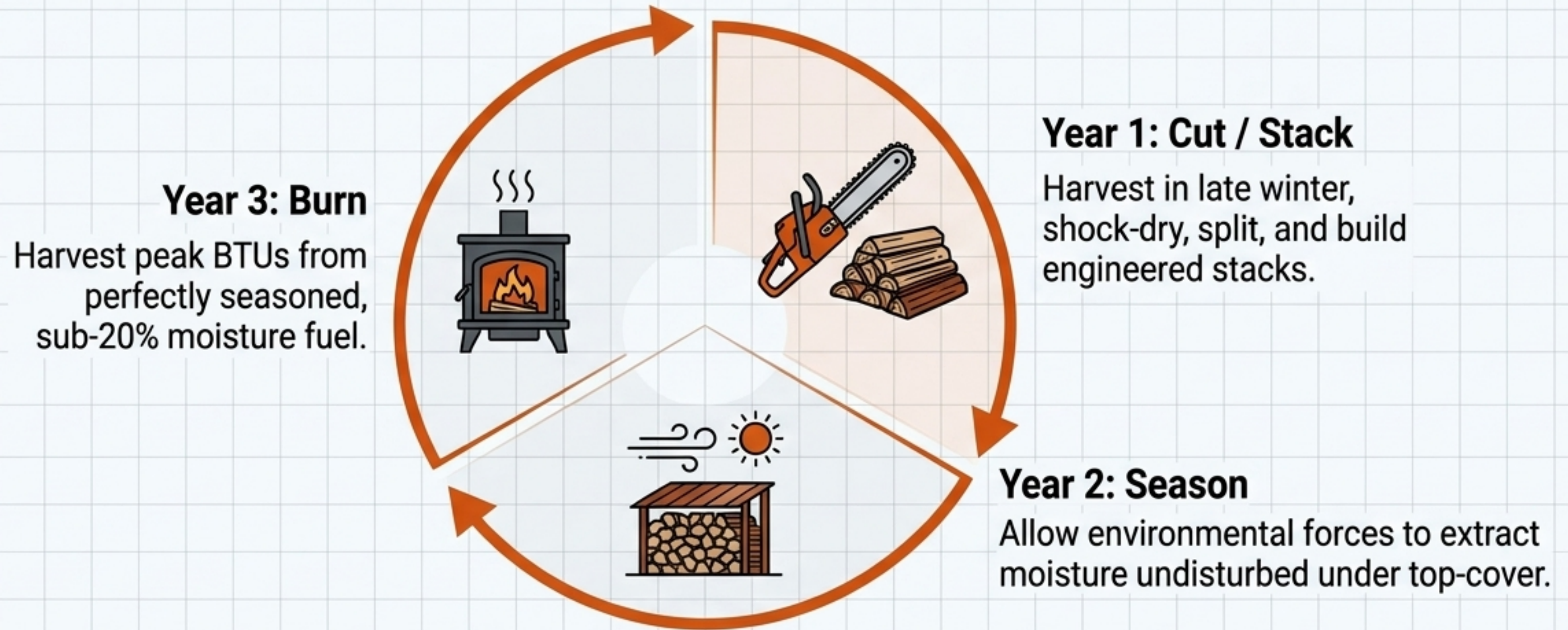
Not That: Mixing species and cutting years.



Do This: Separate stacks by species and label the year cut.

The Blueprint for a Warmer Winter

Mastering your firewood is a multi-year operational strategy.



By maintaining a rolling three-year inventory, you guarantee a perpetual supply of sub-20% moisture fuel. The result is a cleaner chimney, a dramatically warmer home, and maximum return on the time and money invested in your woodburner.